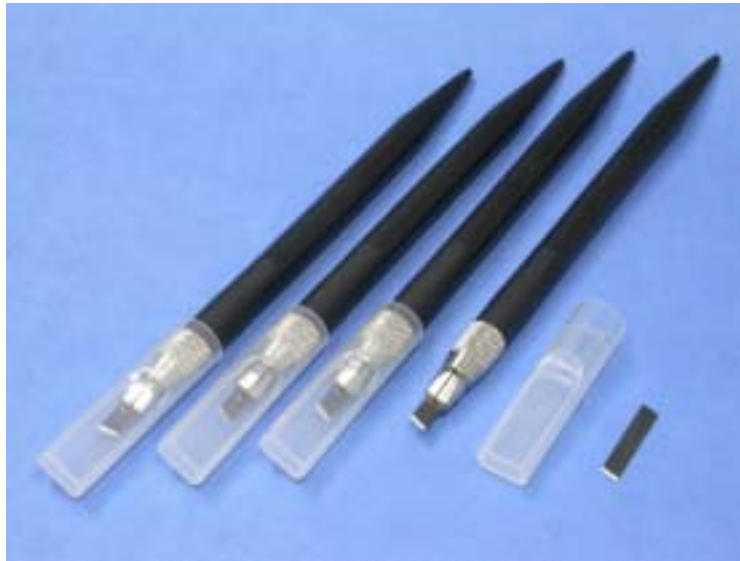


CARBIDE SCRIBE

光纖切割刀

PART NO. : **CB-02**



Main feature:

- ◆ Special designed for fiber surface cutting.
- ◆ Scribe with plastic handle.
- ◆ Blade is changeable for saving cost.
- ◆ Blade material is made by tungsten carbide.
- ◆ Scribe attached with plastic cover for safety reason.
- ◆ Choose other blade upon request. (**CB-02K**)
- ◆ Choose other blade upon request. (**CB-02P**)

Specification:

| | |
|--------|---|
| Blade | CARBIDE , Replaceable . (CB-02K) |
| Handle | PLASTIC . (CB-02P) |
| | |
| | |
| | |

Order:

PART #

CB-02
CB-02K
CB-02P

FiberSource Trading Incorporation
fibersource@fibersource.com.tw